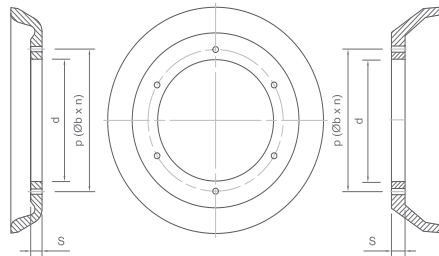




Pig accessories

For all our pipe pigs we supply spare parts such as standard cups, conical cups, discs and guiding and sealing discs. We also provide circular brushes, spring loaded brushes, magnets and gauging plates.

standard cups and conical cups

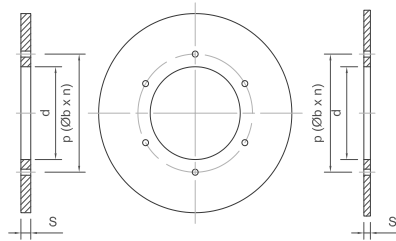


STANDARD CUPS							CONICAL CUPS						
D	d	s	P	b	n	Weight (kg)	D	d	s	P	b	n	Weight (kg)
2"	14	8	-	-	-	0.02	2"	-	-	-	-	-	-
3"	20	10	-	-	-	0.04	3"	-	-	-	-	-	-
4"	27	12	-	-	-	0.1	4"	27	8	-	-	-	0.1
6"	49	20	-	-	-	0.3	6"	49	10	-	-	-	0.2
8"	49	22	-	-	-	0.7	8"	49	12	-	-	-	0.6
10"	61	25	-	-	-	1.4	10"	61	12	-	-	-	1.2
12"	61	28	-	-	-	2.3	12"	61	16	-	-	-	2.0
14"	76.5	31	-	-	-	3.2	14"	76.5	16	-	-	-	3.5
16"	76.5	35	-	-	-	4.8	16"	76.5	18	-	-	-	5.0
18"	180	35	228	15	4	6.0	18"	180	20	228	15	4	6.0
20"	180	35	228	15	4	8.0	20"	180	22	228	15	4	8.0
22"	230	35	280	15	4	9.5	22"	230	25	280	15	4	10.0
24"	278	37	335	18	6	11.0	24"	280	25	335	18	6	12.0
26"	330	38	391	13	6	13.0	26"	330	25	391	18	6	15.0
28"	362	40	425	18	6	15.0	28"	362	28	425	18	6	18.0
30"	412	40	480	18	8	16.0	30"	362	30	425	18	8	22.0
32"	465	40	535	18	8	17.5	32"	412	32	480	18	8	26.0
34"	515	40	585	18	10	19.0	34"	412	35	480	18	8	32.0
36"	562	40	635	18	10	21.5	36"	465	35	535	18	8	38.0
38"	615	40	665	18	10	22.5	38"	465	35	535	18	8	42.0
40"	665	40	715	18	12	23.5	40"	515	40	585	18	10	52.0
44"	715	40	780	18	12	25.5	42"	515	40	585	18	10	63.0
46"	820	50	900	18	14	27.5	46"	820	28	665	18	10	69.0
48"	870	50	955	18	16	33.5	48"	870	28	715	18	12	75.0
56"	970	60	1015	18	16	64.0	56"	970	30	830	18	12	110.0

Dimensions in mm



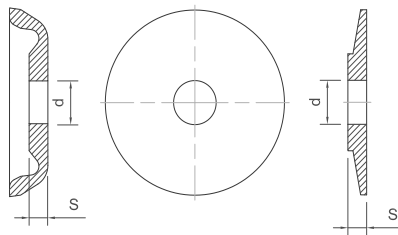
GUIDING DISCS - SEALING DISCS



GUIDING DISCS							SEALING DISCS						
D	d	s	P	b	n	Weight (kg)	D	d	s	P	b	n	Weight (kg)
18"	180	35	228	15	4	3.5	18"	180	20	228	15	4	2.5
20"	180	35	228	15	4	4.5	20"	180	22	228	15	4	3.0
22"	230	35	280	15	4	6.5	22"	230	25	280	15	4	4.0
24"	278	37	335	18	6	7.5	24"	280	25	335	18	6	5.0
26"	330	38	391	13	6	9.0	26"	330	25	391	18	6	6.0
28"	362	40	425	18	6	10.5	28"	362	28	425	18	6	7.0
30"	412	40	480	18	8	13.0	30"	362	30	425	18	8	8.5
32"	465	40	535	18	8	14.0	32"	412	32	480	18	8	9.0
34"	515	40	585	18	10	17.0	34"	412	35	480	18	8	10.5
36"	562	40	635	18	10	18.5	36"	465	35	535	18	8	11.5
38"	615	40	665	18	10	20.5	38"	465	35	535	18	8	13.5
40"	665	40	715	18	12	22.0	40"	515	40	585	18	10	14.5
42"	515	40	585	18	10	25.5	42"	515	40	585	18	10	17.0
44"	715	40	780	18	12	27.0	44"	715	26	830	18	12	18.0
46"	820	50	900	18	14	30.0	46"	820	28	900	18	14	20.0
48"	870	50	955	18	16	31.5	48"	870	28	955	18	16	21.0
56"	970	60	1015	18	16	58.0	56"	970	30	1015	18	16	33.0

Dimensions in mm

STANDARD CUPS AND DISCS 2"-24"



STANDARD CUPS				STANDARD DISCS			
D	d	s	Weight (kg)	D	d	s	Weight (kg)
2"	14	8	0.02	2"	14	8	0.02
3"	20	10	0.04	3"	20	10	0.03
4"	27	12	0.1	4"	27	12	0.7
6"	49	20	0.3	6"	49	20	0.3
8"	49	22	0.7	8"	49	22	0.6
10"	61	25	1.4	10"	61	25	1.0
12"	61	28	2.3	12"	61	28	1.4
14"	76.5	31	3.2	14"	76.5	31	2.4
16"	76.5	35	4.8	16"	76.5	35	3.7
18"	111	35	6.5	18"	111	35	4.3
20"	111	35	8.2	20"	111	35	5.6
22"	111	35	10.5	22"	111	35	7.1
24"	111	37	12.8	24"	111	37	8.9

Dimensions in mm