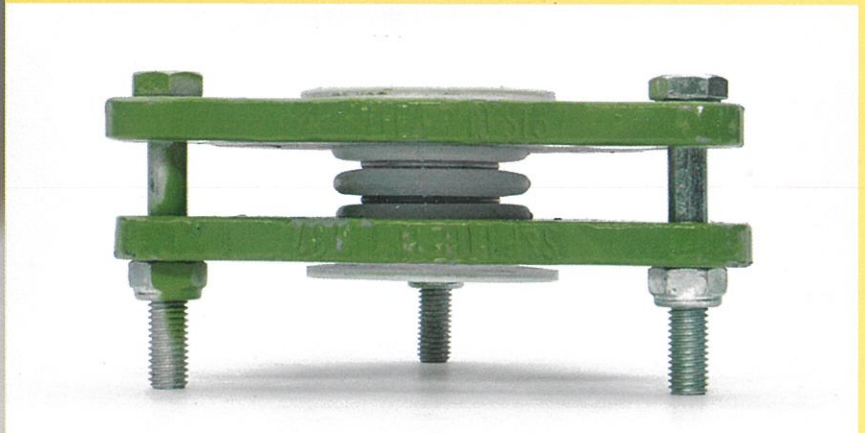
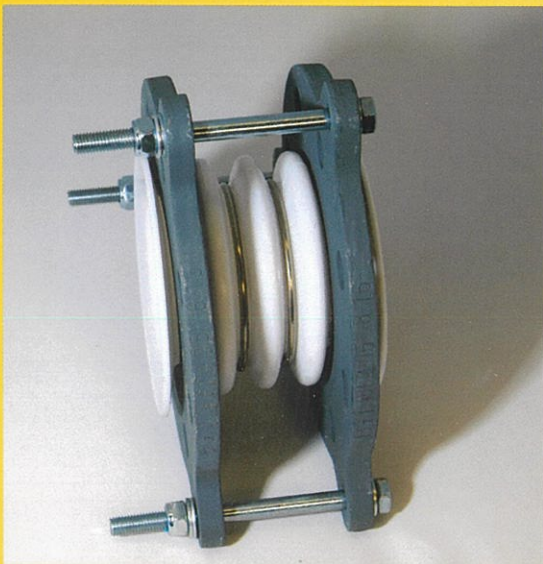
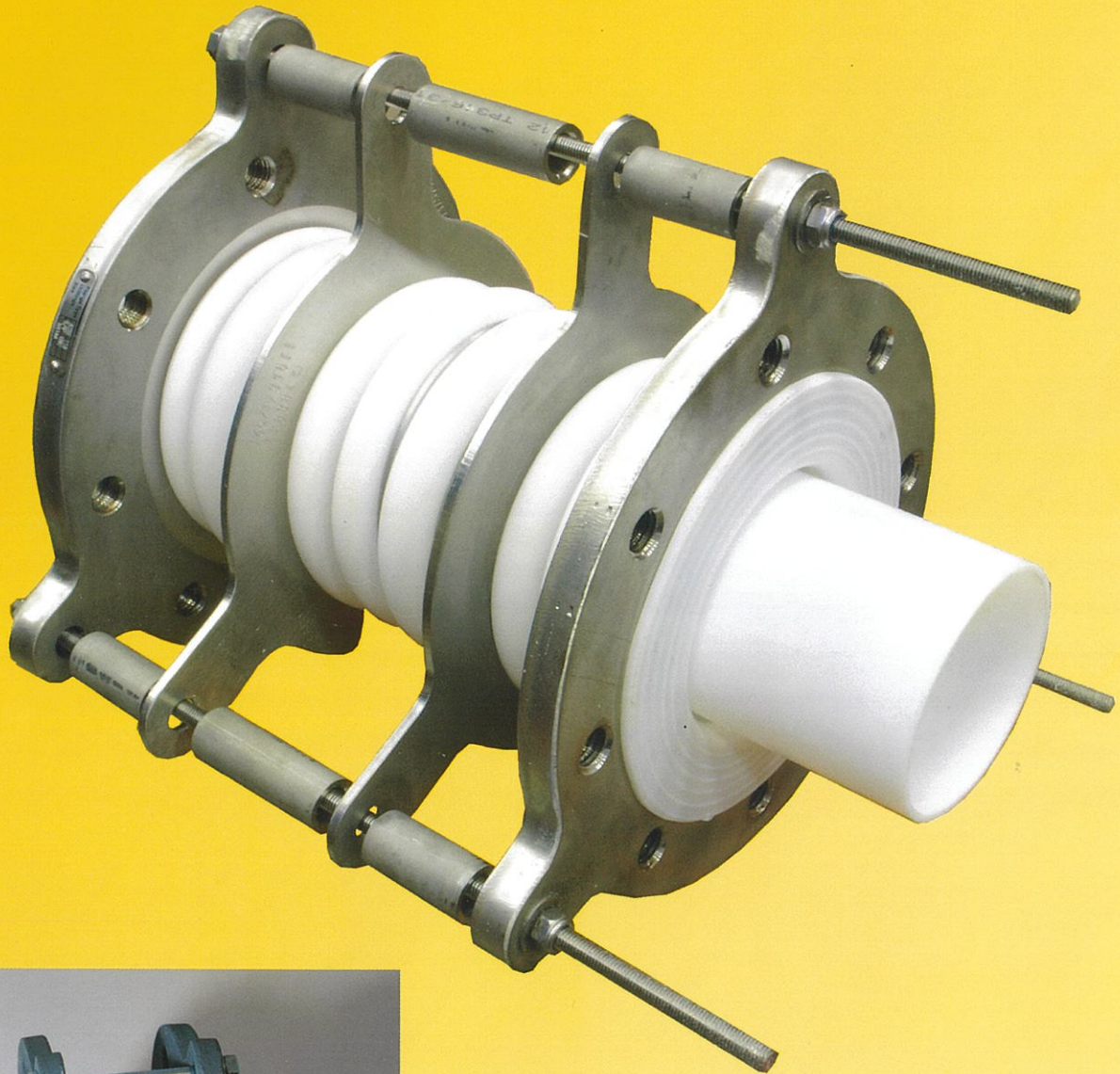


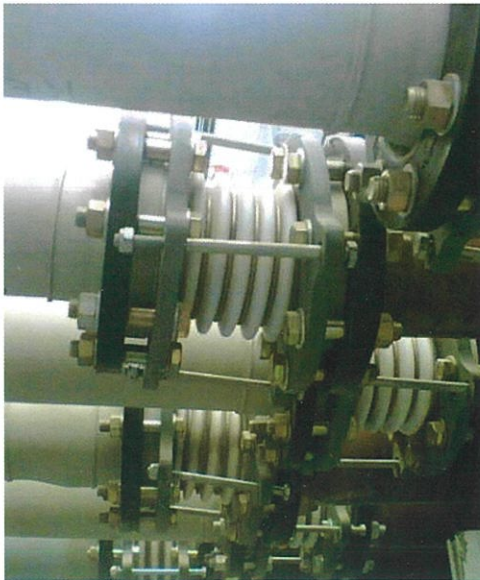
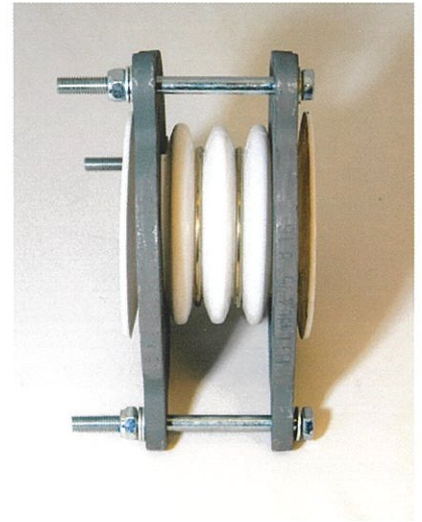
# *PTFE EXPANSION JOINTS*



## STANDARD PTFE EXPANSION JOINTS

BIG STOCK OF BELLOWS WITH 3 CONVOLUTIONS = directly available

- bellow in white PTFE or black PTFE = antistatic execution
- on the outside with stainless steel 304 supporting rings
- with flanges in carbon steel, with a primer, drilled following EN 1092-1 PN10
- limiters in carbon steel 8.8



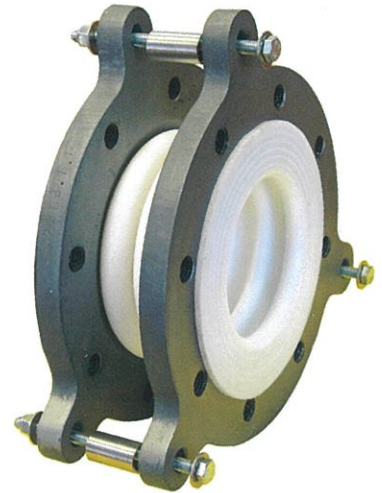
Also available on request :

- short delivery time for bellows with 2 or 5 convolutions
- with outer reinforcing rings in Monel or Hastelloy C4
- with drilling following EN1092-1 PN16, ANSI B16.5 class 150, BS, JIS, ...
- with flanges and limiters in stainless steel
- with hinges
- can be provided with vacuum supporting rings coated with PTFE / PFA
- can be provided with a twisted drilling (flange 1 in relation to flange 2)



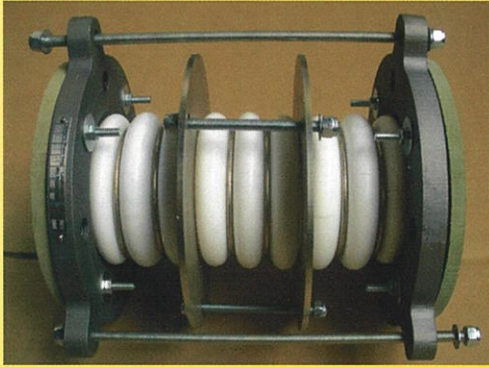
## PTFE CEXPANSION JOINTS : Heavy Duty and Extra Heavy Duty

- Expansion Joints with bellows in Heavy Duty or Extra Heavy Duty execution.
- bellow in white PTFE or black PTFE antistatic PTFE
- 2, 3 up to 10 convolutions
- from 6 convolutions with one or more anti-snaking flange
- with flanges drilled following EN 1092-1, ANSI, BS, JIS, ....  
With threaded holes
- flanges in carbon steel, with a high temperature coating (150° C), or in stainless steel (304 or 316L)
- tie-rods in carbon steel 8.8 or stainless steel (A2 or A4)
- outer reinforcing rings in stainless steel 304 ; on request available in Monel or Hastelloy C4



**ALSO AVAILABLE**

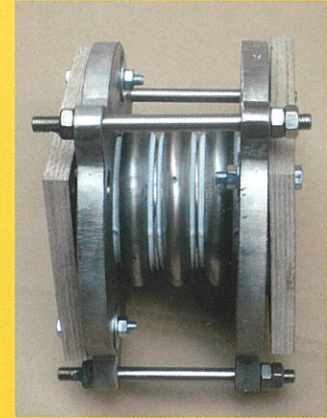
With anti-snaking flanges



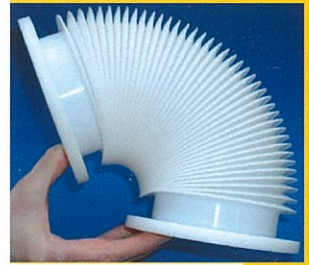
Stainless steel expansion joint fully PTFE lined



With outer reinforcing shells



PTFE lined bends



Machined bellows



PTFE lined reductions : concentric or eccentric

PTFE lined T-pieces